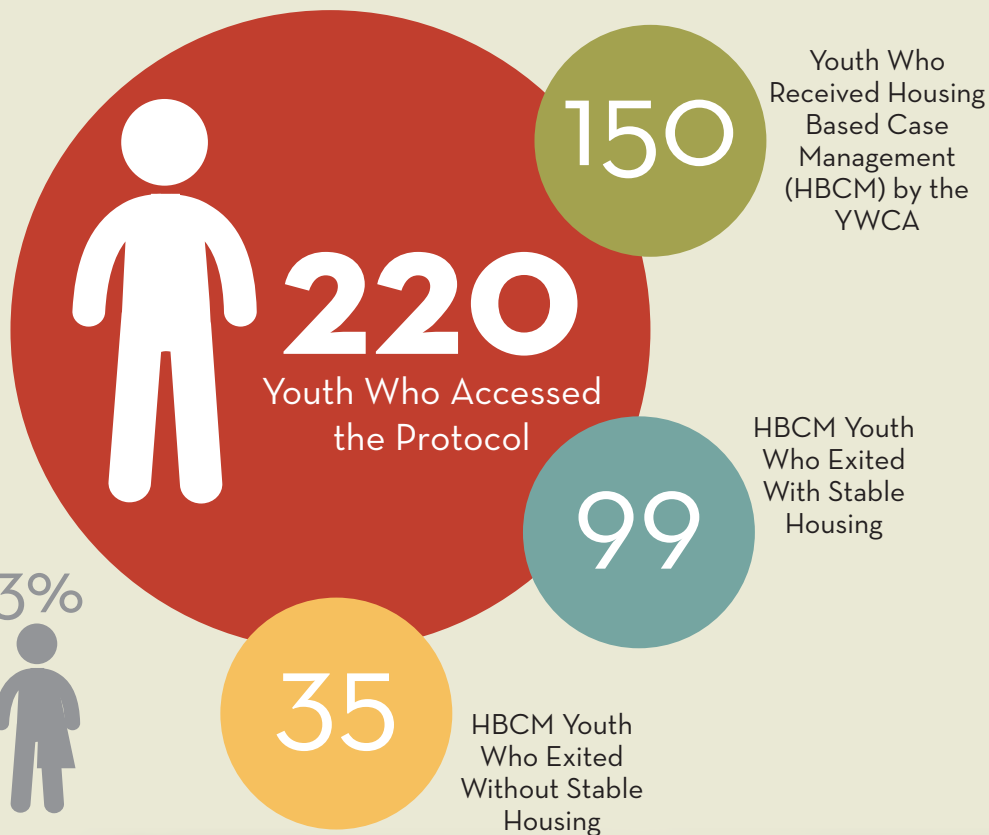
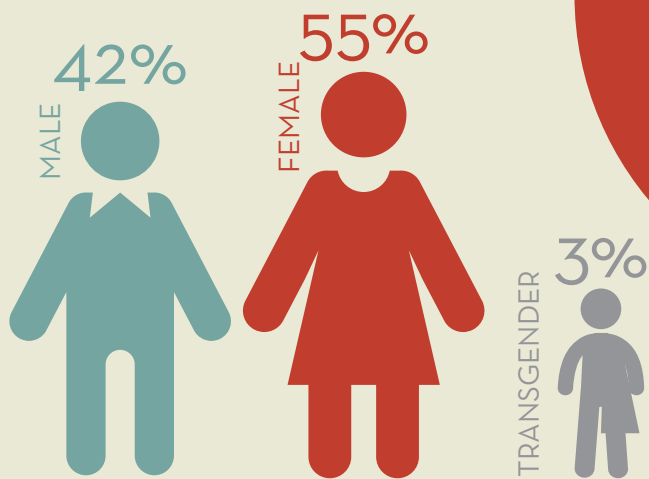


taking action on
YOUTH HOMELESSNESS

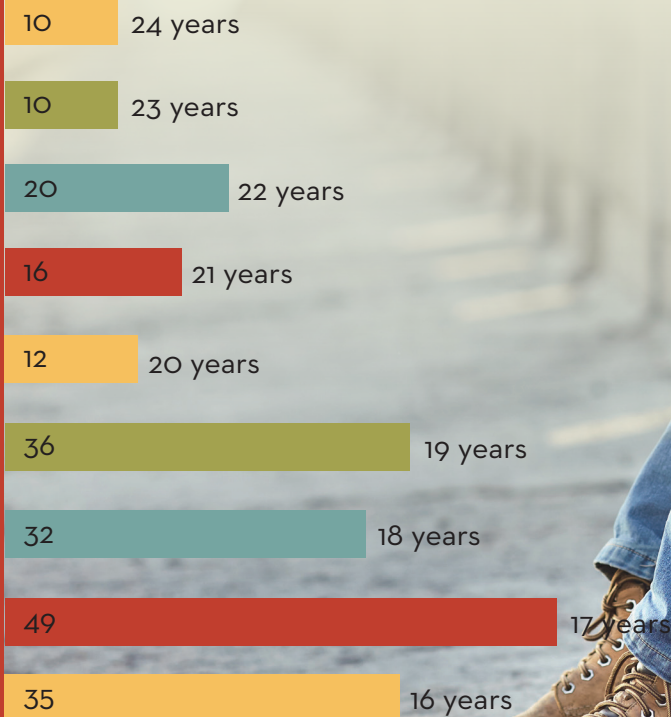
**PREVENTING AND
ENDING YOUTH HOMELESSNESS
IN ST. THOMAS-ELGIN**

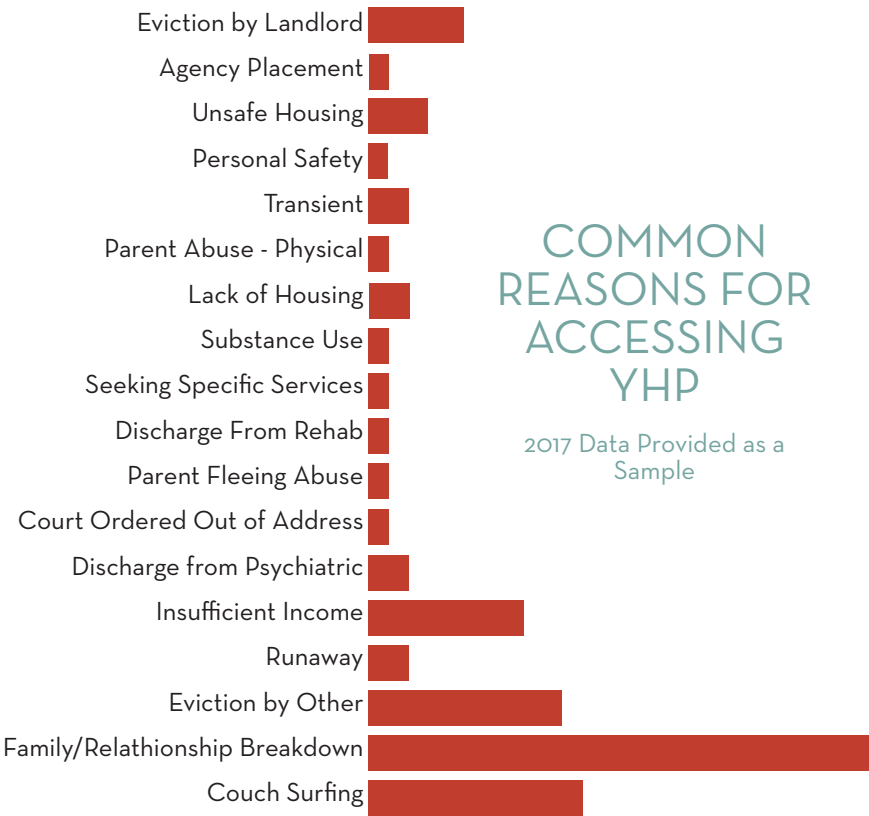
March 2016 - July 2018

GENDER IDENTITY
BREAKDOWN OF YHP YOUTH

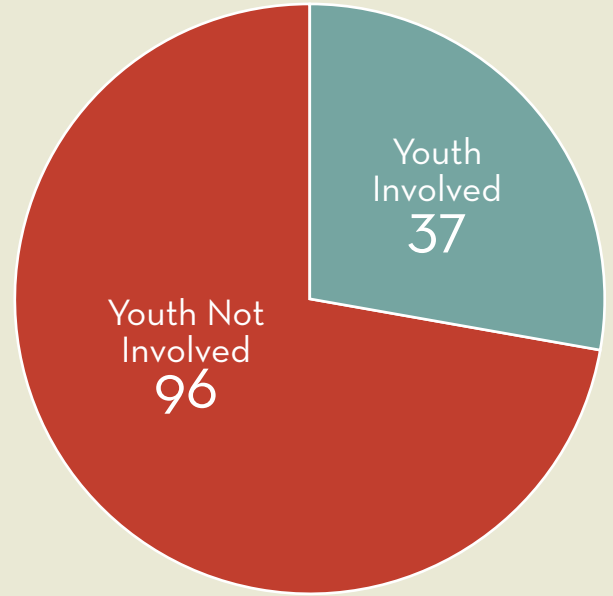


AGE
DISTRIBUTION
OF YHP YOUTH
(N=220)





YOUTH INVOLVED WITH THE JUSTICE SYSTEM (N=133)



IMPACT OF HOUSING BASED CASE MANAGEMENT



61%

of successful youth exits were supported by support and reconnection with family members and caring adults.



26%

of the youth participants were attending education classes/earning educational credits upon exit.



39%

of the homeless youth supported were working towards gaining employment

YOUTH ACCESSING THE HEALTH CARE SYSTEM

In examining the youth's interaction with the health system, 17 youth were admitted to hospital for medical and/or mental health needs. The average stay was 12.8 days with the longest stay being 90 days. 37 youth in need of urgent medical/mental health care accessed Emergency Department services 104 times.

YOUTH INVOLVEMENT WITH CHILD PROTECTION

Youth involved with child protection services are often at greater risk for homelessness. Of the 220 youth accessing the Youth Homelessness Protocol, 17% or 38 youth were involved with child protection services. These youth were matched with a Youth in Transition Worker from the YWCA and/or Family and Children's Services. This number does not include all youth in care or former youth in care experiencing homelessness who were already connected with a Youth in Transition Worker, just those who accessed the Protocol.

25 Youth Returned to a Family Home



41 Youth Returned to Permanent Housing With Family or Friend